



EasyWorld Software

Introduction





EasyWorld Software Mission Statement

- Our mission is to be the premiere provider of mission-critical business and accounting software and services to companies in North America delivering personalized solutions meeting the unique and individualized needs of our customers providing unparalleled attention to our client's changing needs and challenges.





Why Choose EasyWorld Software?

- Ease of Use
- Customization and Support Services
- Fixed Cost for Software, Support, Upgrade, Training and Customization Services
- Software Updated to Current Version (Monthly, Quarterly and Annually)
- Flexible User Security
- Software Flexibility
- 100% Made in USA
- In Person Information Gathering and Support Services





Why Choose EasyWorld Software?

- **Company Stability:** In this world of ever increasing mergers, acquisitions, accounting scandals and bankruptcies of multi-billion dollar companies, you can feel safe with EasyWorld Software. We are a closely managed company with high ethics and a sole purpose of delivering the best possible software meeting our clients ever changing business needs. We will not be sold and we will not merge! You can rely on us now and for many years to come!





EasyWorld Technical Overview

- Windows Software
- Additional Web Based Interface Available
- Software runs at your location
- Data is stored at your location
- Client/Server Architecture
- Microsoft SQL Server 2005 Database
- Unlimited Number of Records
- Unlimited Number of Transactions
- Unlimited Number of Companies, Divisions, Departments, Locations, Locations' Locations and Locations' Locations Areas, Lots, and Serial Numbers.





EasyWorld System Overview

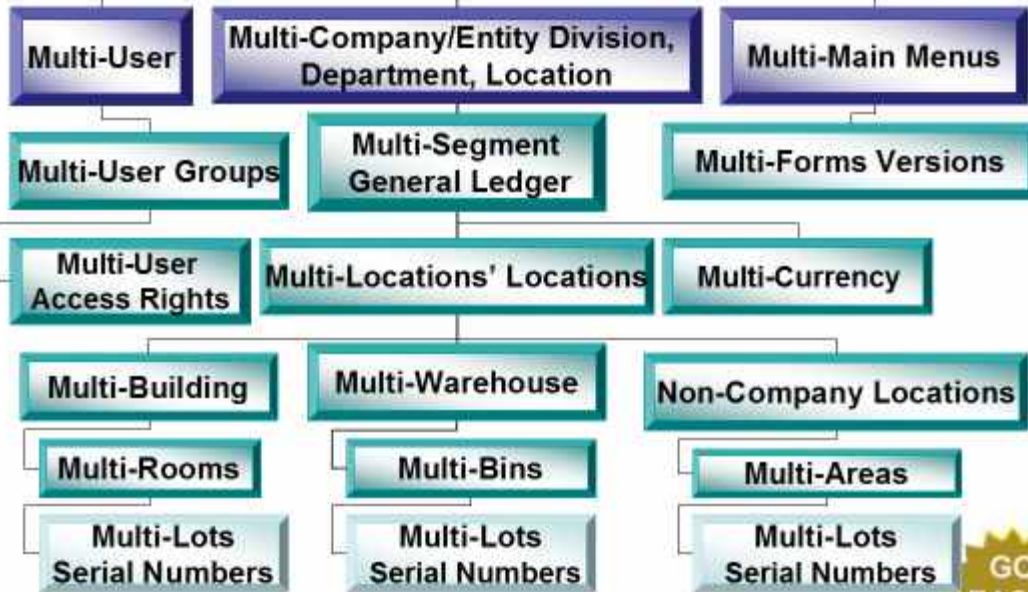
- Segmented General Ledger
Company-Division-Department-Natural Account
- User Login Security By Module
Users See Only Granted Modules
- User Login Security By Sub-Module
Add, Edit, Delete, Approve, Post and View Rights
- Multiple Main Menus
Assigned to Individual User Logins
- Multiple Form Versions
Assigned to Individual User Logins
- All Transactions User Login and Time Stamped





EasyWorld is Multi-Enabled

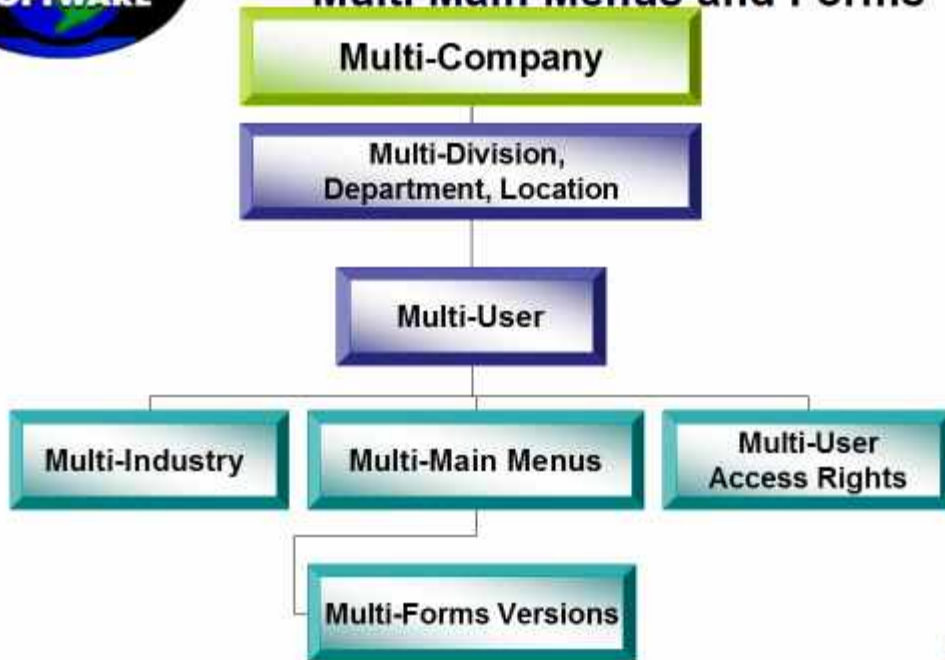
Multi-Company/Entity



GO EASY!



EasyWorld Multi Main Menus and Forms





MAIN MENU – Expanded Version (Default) (Access to 30+ Modules)

EasyWorld Accounting Enterprise 1

File Edit View Window Help

Menu: System Setup Security User

TCO TEST03 Company All Companies Companies Create New Manage Help

Main

- Installed Modules
- Accounts Payable
- Accounts Receivable
- Billing
- Call Accounting
- Contract Connection
- Communications
- Contracts
- Contacts
- Documents
- Ergonomics
- Error Log
- Fixed Assets
- Feedback
- Fixed Accounting
- General Ledger
- Human Resources
- Inventory Control
- Insurance
- Localities
- Order Entry
- Payroll
- Projects
- Production
- Purchase Orders
- Point Of Sale
- Quotes
- Receiving
- Risk Management
- Reports Engine
- Sales Force Automation
- Shipping
- System Information
- Student Records
- Treasury

Bank Acct	GL Account #	Deposited Amt	Bank Bal
Cash - Checking	110000 TCO-DIV0001-DEPO001.LOC0001	\$19,035.30	\$19,035.30
Cash - Payroll	111000 TCO-DIV0001-DEPO001.LOC0001	\$300.00	\$300.00
Cash - Savings	112000 TCO-DIV0001-DEPO001.LOC0001	\$0.00	\$0.00
Party Cash	113000 TCO-DIV0001-DEPO001.LOC0001	\$0.00	\$0.00

Date	Month	Year to Date	Quantity	Total Amount
Today			0	\$0.00
Orders			0	\$0.00
Quotes			0	\$0.00
Invoices			0	\$0.00
Purchase Orders			0	\$0.00
RFI Receipts			0	\$0.00
Vouchers			0	\$0.00
Credit Memos			0	\$0.00
AP Payments			0	\$0.00
AR Payments			0	\$0.00
GL Transactions			0	\$0.00
Contact Events			0	na
Messages			0	na

Date	Month	Year to Date	Quantity	Total Amount
Today			484	\$512,348,488.81
Orders			2	\$890.00
Invoices			187	\$5,776,188.07
Purchase Orders			288	\$2,515,025.08
RFI Receipts			244	\$4,425,045.45
Vouchers			2	\$300.00
Credit Memos			8	\$0.00
AP Payments			35	\$71,215.50
AR Payments			30	\$297,870.68
GL Transactions			471	\$3,893,860.22
Contact Events			402	na
Messages			4	na

Company Events

Date	Caption
1/1/2006	Dept Head M...
1/1/2006	Steering Com...
1/2/2006	Dept Meeting

My Events

Date	Caption
1/2/2004	Meeting - Lun...

Messages

From	Date	Caption
Administrat...	1/1/2006	Test1
Administrat...	1/1/2006	Meeting Request
Administrat...	1/8/2006	Test2

Transactions

Due Date	Caption	Description	Amount
1/1/2006	Dept Empg SC...	Dept Employee Hourly ...	0

2/25/2006 1:49:00





MAIN MENU – List1 Version (Access to 2 Modules)

EasyWorld Accounting Enterprise 1

File Edit View Window Help

STUDENT REGISTRATION
 STUDENT RECORDS
 STUDENT MAINTENANCE
 CLASS MAINTENANCE

3/18/2008 2:14 PM





EasyWorld Accounting Overview



EasyWorld Compliance GAAP & Sarbanes Oxley

- Complete Audit Trail Tracks All Changes
- History of all transactions within the system
- Transactions effecting the General Ledger can not be edited or deleted.
- There is Multi-Level password security
- Separation of Business Functions
- Purchase approval process
- Payments approval process



**GO
EASY!**



EasyWorld Multi Tier Design



EasyWorld Software can utilize the most current technologies for internal and external data interaction.





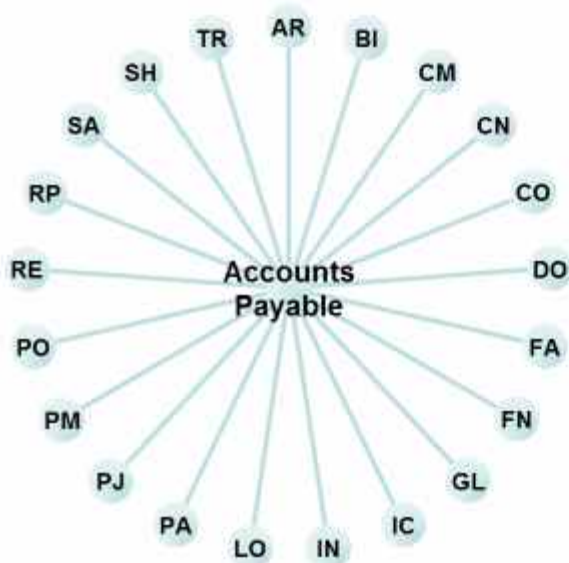
EasyWorld Modules Integration

- EasyWorld Software is comprised of a suite of highly integrated modules.





EasyWorld Accounts Payable Integration

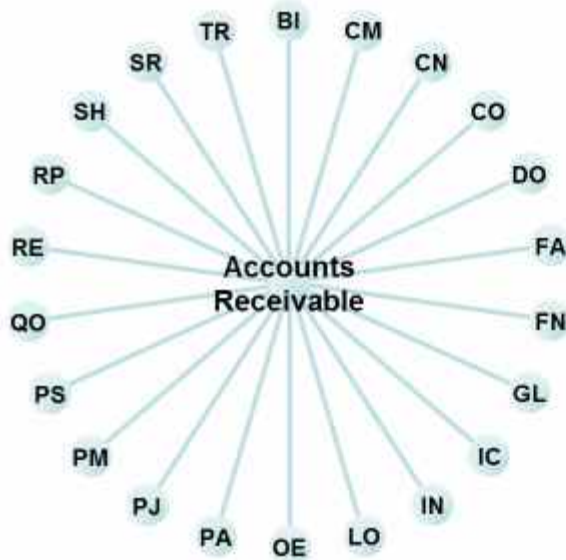


- AR Accounts Receivable
- BI Billing
- CM Communications (Messaging On Events)
- CN Contracts
- CO Contacts
- DO Documents
- FA Fixed Assets
- FN Fund Accounting
- GL General Ledger
- HR Human Resources
- IC Inventory Control
- PA Payroll
- PJ Projects
- PM Production
- PO Purchase Orders
- RE Receiving
- RP Reports Engine
- SH Shipping
- TR Treasury





EasyWorld Accounts Receivable Integration

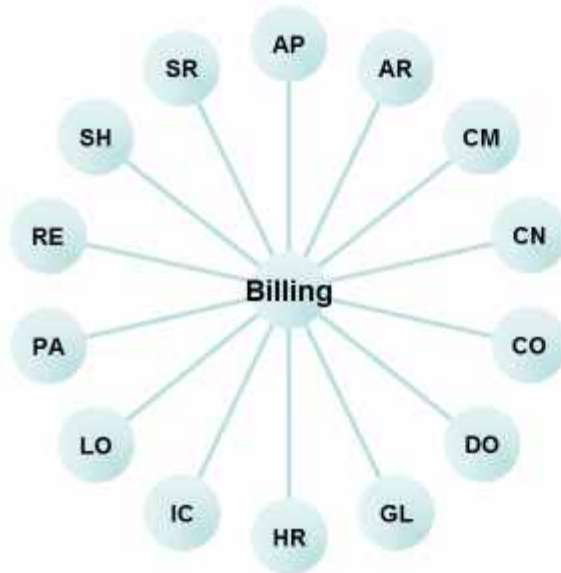


- BI Billing
- CM Communications (Messaging On Events)
- CN Contracts
- CO Contacts
- DO Documents
- FA Fixed Assets
- FN Fund Accounting
- GL General Ledger
- HR Human Resources
- IC Inventory Control
- OE Order Entry
- PA Payroll (Commissions)
- PJ Projects
- PM Production
- PS Point of Sale
- QO Quotes
- RE Receiving
- RP Reports Engine
- SH Shipping
- SR Student Records
- TR Treasury





EasyWorld Billing Integration

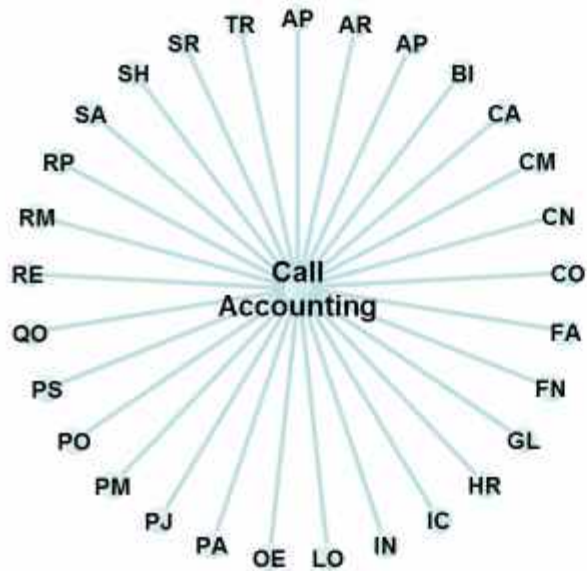


- AP Accounts Payable
- AR Accounts Receivable
- CM Communications
(Messaging On Events)
- CN Contracts
- CO Contacts
- DO Documents
- GL General Ledger
- HR Human Resources
- IC Inventory Control
- LO Locations
- PA Payroll
(Commissions)
- RE Receiving
- SH Shipping
- SR Student Records





EasyWorld Call Accounting Integration

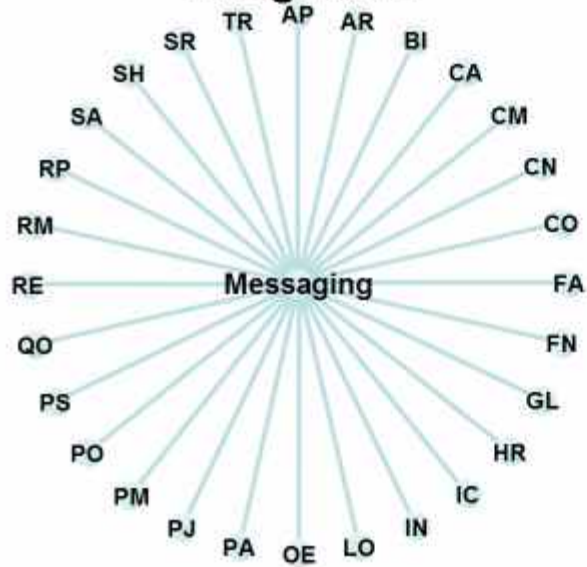


- AR Accounts Receivable
- AP Accounts Payable
- BI Billing
- CA Call Accounting
- CM Communications (Messaging On Events)
- CN Contracts
- CO Contacts
- FA Fixed Assets
- FN Fund Accounting
- GL General Ledger
- HR Human Resources
- IC Inventory Control
- LO Locations
- OE Order Entry
- PA Payroll
- PJ Projects
- PM Production
- PO Purchase Orders
- PS Point of Sale
- QO Quotes
- RE Receiving
- RP Reports Engine
- RM Risk Management
- SA Sales Force Automation
- SH Shipping
- SR Student Records
- TR Treasury





EasyWorld Communications Messaging Integration

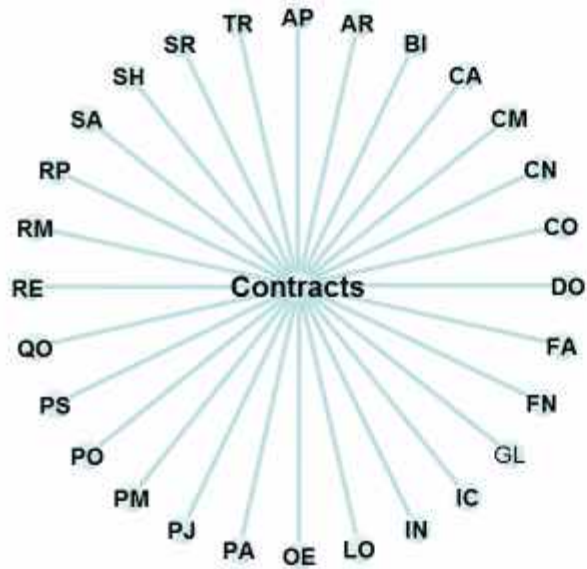


- AR Accounts Receivable
- AP Accounts Payable
- BI Billing
- CA Call Accounting
- CM Communications (Messaging On Events)
- CN Contracts
- CO Contacts
- FA Fixed Assets
- FN Fund Accounting
- GL General Ledger
- HR Human Resources
- IC Inventory Control
- LO Locations
- OE Order Entry
- PA Payroll
- PJ Projects
- PM Production
- PO Purchase Orders
- PS Point of Sale
- QO Quotes
- RE Receiving
- RM Risk Management
- RP Reports Engine
- SA Sales Force Automation
- SH Shipping
- SR Student Records
- TR Treasury





EasyWorld Contracts Integration

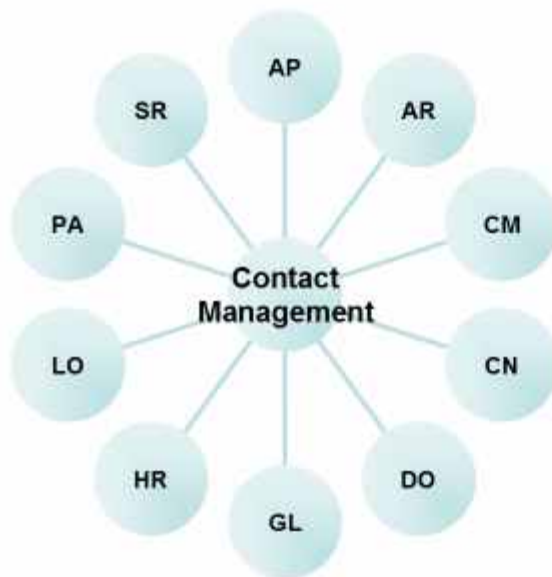


- AP Accounts Payable
- AR Accounts Receivable
- BI Billing
- CA Call Accounting
- CM Communications
(Messaging On Events)
- CN Contracts
- CO Contacts
- DO Documents
- FA Fixed Assets
- FN Fund Accounting
- GL General Ledger
- HR Human Resources
- IC Inventory Control
- OE Order Entry
- PA Payroll
- PJ Projects
- PM Production
- PO Purchase Orders
- PS Point of Sale
- QO Quotes
- RE Receiving
- RM Risk Management
- RP Reports Engine
- SA Sales Force Automation
- SH Shipping
- SR Student Records
- TR Treasury





EasyWorld Contact Management Integration

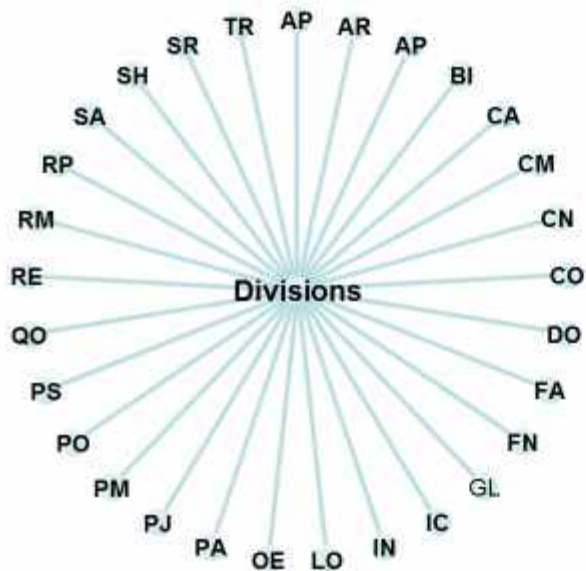


- AP Accounts Payable
- AR Accounts Receivable
- CM Communications (Messaging On Events)
- CN Contracts
- DO Documents
- GL General Ledger
- HR Human Resources
- LO Locations
- PA Payroll (Employee Cost Tracking)
- SR Student Records





EasyWorld Divisions Integration

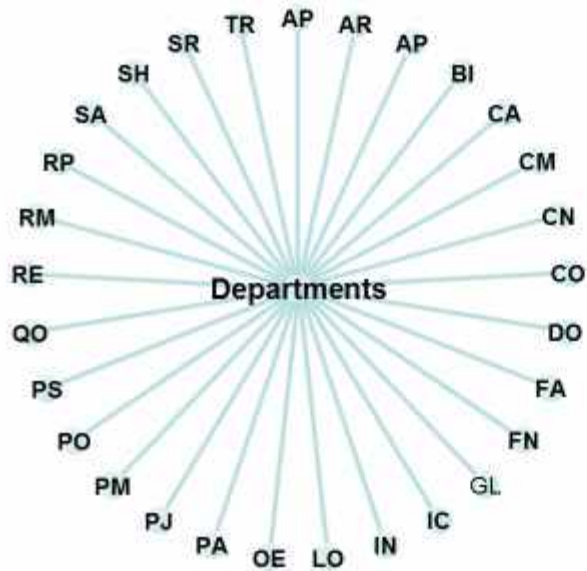


- AP Accounts Payable
- AR Accounts Receivable
- BI Billing
- CA Call Accounting
- CM Communications
(Messaging On Events)
- CN Contracts
- CO Contacts
- DO Documents
- FA Fixed Assets
- FN Fund Accounting
- GL General Ledger
- HR Human Resources
- IC Inventory Control
- OE Order Entry
- PA Payroll
- PJ Projects
- PM Production
- PO Purchase Orders
- PS Point of Sale
- QO Quotes
- RE Receiving
- RM Risk Management
- RP Reports Engine
- SA Sales Force Automation
- SH Shipping
- SR Student Records
- TR Treasury





EasyWorld Departments Integreation

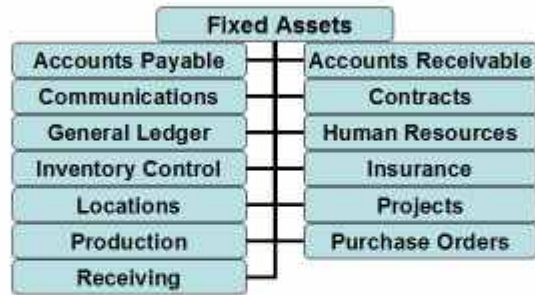


- AP Accounts Payable
- AR Accounts Receivable
- BI Billing
- CA Call Accounting
- CM Communications
(Messaging On Events)
- CN Contracts
- CO Contacts
- DO Documents
- FA Fixed Assets
- FN Fund Accounting
- GL General Ledger
- HR Human Resources
- IC Inventory Control
- OE Order Entry
- PA Payroll
- PJ Projects
- PM Production
- PO Purchase Orders
- PS Point of Sale
- QO Quotes
- RE Receiving
- RM Risk Management
- RP Reports Engine
- SA Sales Force Automation
- SH Shipping
- SR Student Records
- TR Treasury



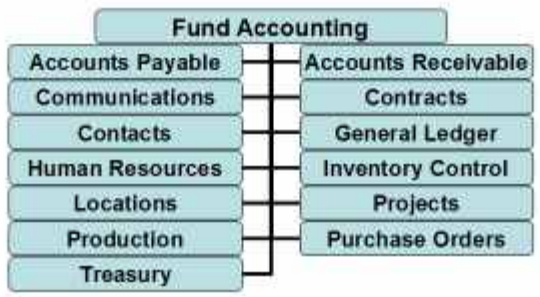


EasyWorld Fixed Assets Integration



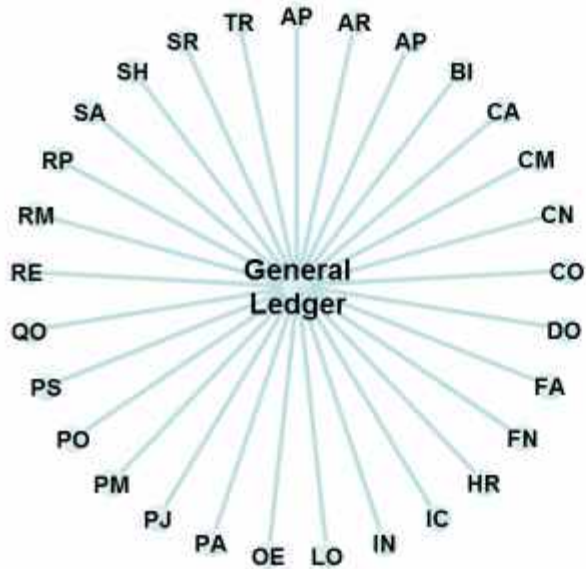


EasyWorld Fund Accounting Integration





EasyWorld General Ledger Integration

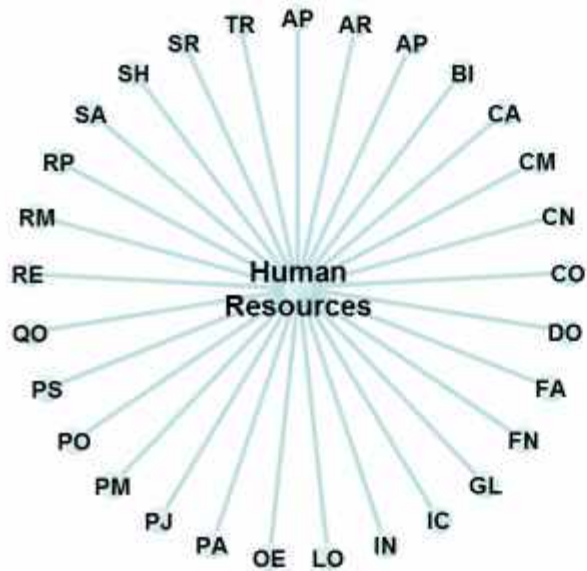


- AP Accounts Payable
- AR Accounts Receivable
- BI Billing
- CA Call Accounting
- CM Communications (Messaging On Events)
- CN Contracts
- CO Contacts
- DO Documents
- FA Fixed Assets
- FN Fund Accounting
- HR Human Resources
- IC Inventory Control
- LO Locations
- OE Order Entry
- PA Payroll
- PJ Projects
- PM Production
- PO Purchase Orders
- PS Point of Sale
- QO Quotes
- RE Receiving
- RM Risk Management
- RP Reports Engine
- SA Sales Force Automation
- SH Shipping
- SR Student Records
- TR Treasury





EasyWorld Human Resources Integration

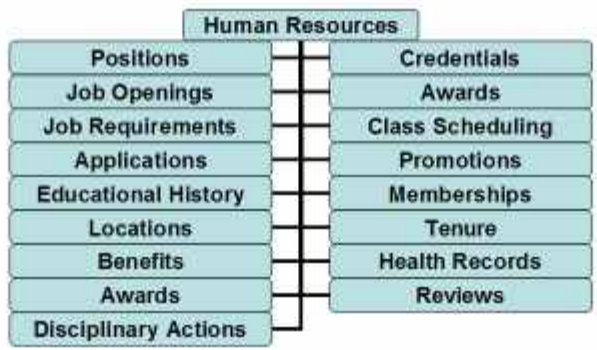


- AP Accounts Payable
- AR Accounts Receivable
- BI Billing
- CA Call Accounting
- CM Communications (Messaging On Events)
- CN Contracts
- CO Contacts
- DO Documents
- FA Fixed Assets
- FN Fund Accounting
- GL General Ledger
- IC Inventory Control
- LO Locations
- OE Order Entry
- PA Payroll
- PJ Projects
- PM Production
- PO Purchase Orders
- PS Point of Sale
- QO Quotes
- RE Receiving
- RM Risk Management
- RP Reports Engine
- SA Sales Force Automation
- SH Shipping
- SR Student Records
- TR Treasury



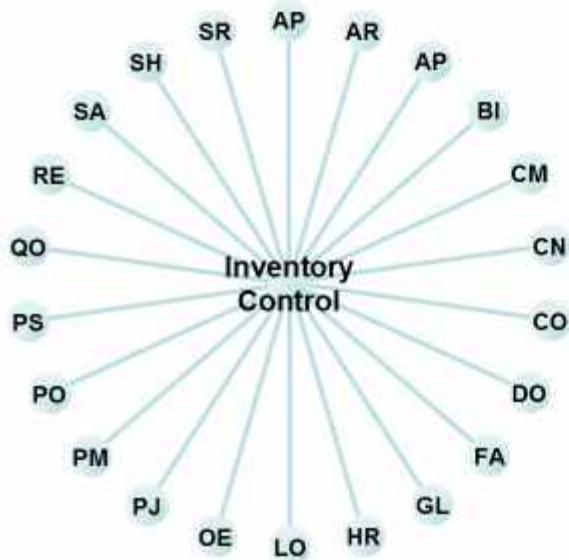


EasyWorld Human Resources Functions





EasyWorld Inventory Control Integration

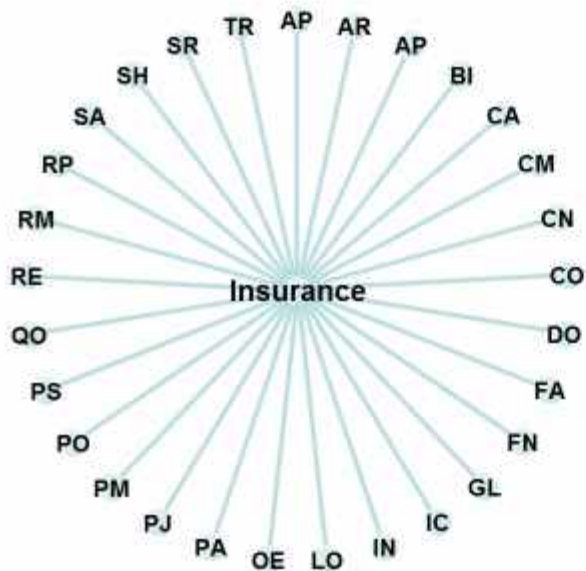


- AP Accounts Payable
- AR Accounts Receivable
- BI Billing
- CM Communications (Messaging On Events)
- CN Contracts
- CO Contacts
- DO Documents
- FA Fixed Assets
- GL General Ledger
- HR Human Resources
- OE Locations
- PA Order Entry
- PM Projects
- PO Production
- PS Purchase Orders
- QO Point of Sale
- RE Quotes
- RM Receiving
- SA Sales Force Automation
- SH Shipping
- SR Student Records





EasyWorld Insurance Integration (Documents)

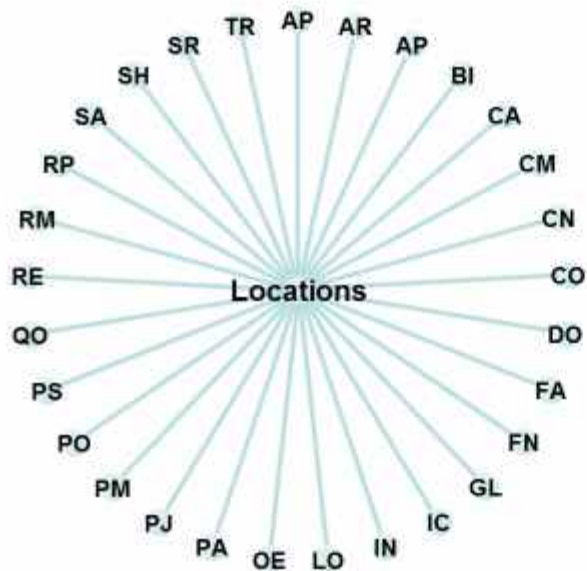


- AP Accounts Payable
- AR Accounts Receivable
- BI Billing
- CA Call Accounting
- CM Communications
(Messaging On Events)
- CN Contracts
- CO Contacts
- DO Documents
- FA Fixed Assets
- FN Fund Accounting
- GL General Ledger
- HR Human Resources
- IC Inventory Control
- OE Order Entry
- PA Payroll
- PJ Projects
- PM Production
- PO Purchase Orders
- PS Point of Sale
- QO Quotes
- RE Receiving
- RM Risk Management
- RP Reports Engine
- SA Sales Force Automation
- SH Shipping
- SR Student Records
- TR Treasury





EasyWorld Locations Integration

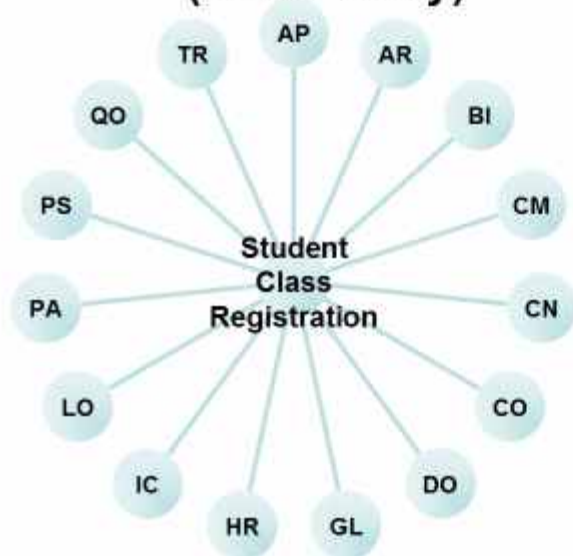


- AP Accounts Payable
- AR Accounts Receivable
- BI Billing
- CA Call Accounting
- CM Communications (Messaging)
- CN Contracts
- CO Contacts
- DO Documents
- FA Fixed Assets
- FN Fund Accounting
- GL General Ledger
- HR Human Resources
- IC Inventory Control
- OE Order Entry
- PA Payroll
- PJ Projects
- PM Production
- PO Purchase Orders
- PS Point of Sale
- QO Quotes
- RE Receiving
- RM Risk Management
- RP Reports Engine
- SA Sales Force Automation
- SH Shipping
- SR Student Records
- TR Treasury





EasyWorld Class Registration Integration (Order Entry)



- AP Accounts Payable
- AR Accounts Receivable
- BI Billing
- CM Communications
(Messaging On Events)
- CN Contracts
- CO Contacts
- DO Documents
- GL General Ledger
- HR Human Resources
- IC Inventory Control
- LO Locations
- PA Payroll
(Commissions)
- PS Point of Sale
- QO Quotes
- TR Treasury



Class Registration (Expanded)

Student Class Registration

Student Data
 Student ID: AdamsCohen | Mailing ID: AdamsCohen
 Billing Name: AdamsCohen | Mailing Name: AdamsCohen
 Address 1: 725 King St #1003 | Address 2: |
 City/State: Walnut, CA | City/State: Walnut, CA
 Country: USA | Zip: 90009 | Country: USA | Zip: 90009

Class Categories
 Cat 1: | Cat 2: | Cat 3: | Cat 4: | Cat 5: | OOH: | OCM: |
 Point: NONE | ATE: | PE:

Item ID	Short Name	Units Qty	Inv Qty	Units	Unit Price	Disc %	Disc
ACCE	Anatomy General	3	3	UNIT	\$150.00	0.00	No

Class Registration | Notes | Instructions | Description | History | Registration Routing | Class Routing | Student Routing

Lookup Classes By:
 Class Bundle History Multiple

Lookup Classes By:
 Scale UPC OFF

Sub Total: \$450.00
 Discount: 0.00 \$0.00
 Sales Tax: \$0.00
 Total: \$450.00

REG#: 00004100002
 Building: | Room: |
 REG Date: | Due Date: |
 Post REG / Sales Item / Printed Sale:
 Scale: | UPC: |

REG Date: | Due Date: |
 Post REG / Sales Item / Printed Sale:
 Scale: | UPC: |

10/20/06 4:38 PM





Class Registration (Simplified 1)

EasyWorld Accounting System 1

Student Class Registration

Student Data

Student ID: Mailing ID:

Billing Name: Mailing Name:

Address 1: Address 1:

Address 2: Address 2:

City/State: City/State:

Country: Zip: Country: Zip:

Salesperson: Tax: Terms: Credits:

Class Categories

Car 1: Car 2: Car 3: Car 4: Car 5: Car 6: Car 7: Car 8:

Line Items

Item ID	Short Name	UOM	Qty	Unit Price	Disc %	Tax	Total	Sales Cr. Amt
ACGE	Academy General	3	1	\$152.00	0.00	7%	\$452.00	13889.700

OE Notes

Linkup Classes By

Class Bundle History Multiple

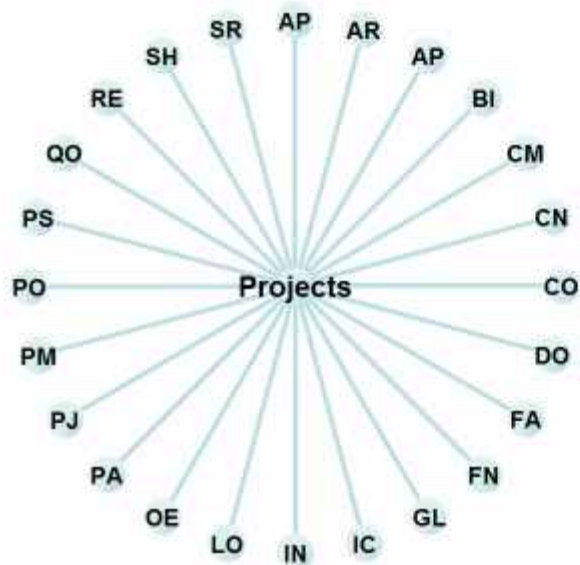
Sub Total:
Discount:
Sales Tax:
Total:

4/25/2005 2:10 PM





EasyWorld Projects Integration

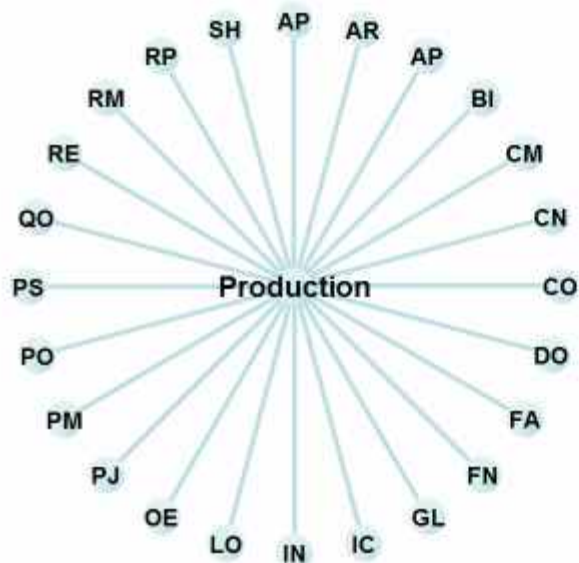


- AP Accounts Payable
- AR Accounts Receivable
- BI Billing
- CM Communications (Messaging On Events)
- CN Contracts
- CO Contacts
- DO Documents
- FA Fixed Assets
- FN Fund Accounting
- GL General Ledger
- HR Human Resources
- IC Inventory Control
- OE Order Entry
- PA Payroll
- PM Production
- PO Purchase Orders
- PS Point of Sale
- QO Quotes
- RE Receiving
- SH Shipping
- SR Student Records





EasyWorld Production Integration



- AP Accounts Payable
- AR Accounts Receivable
- BI Billing
- CM Communications (Messaging On Events)
- CN Contracts
- CO Contacts
- DO Documents
- FA Fixed Assets
- FN Fund Accounting
- GL General Ledger
- HR Human Resources
- IC Inventory Control
- OE Order Entry
- PJ Projects
- PM Production
- PO Purchase Orders
- PS Point of Sale
- QO Quotes
- RE Receiving
- RM Risk Management
- RP Reports Engine
- SH Shipping





Production (Main Tab)

EasyWorld Accounting Enterprise 1

Projects / POM

Man | Dashboard

Man | All Customers | AP Vendors

ID: 10000 Start Date: 1/20/2008
Name: 10000 Test End Date: 12/31/2008
Type: CUSTOMER
Manager: Location: Dallas

Description: None | Financial Data

	Estimated	Actual	Variance
Cost	\$1,300.00	\$300.00	\$950.00
Revenue	\$2,000.00	\$175.00	\$1,825.00
Net	\$1,300.00	\$875.00	\$425.00

Man | Requests

- CLOSE
- PRINT PROJECT
- PREVIEW PROJECT
- UPDATE
- REDELEGATE
- AP TRANSACTIONS
- AP TRANSACTIONS
- CANCEL PROJECT

Man | AR Orders | AR Shipping | AR Invoices | AP Purchase Order | AP Receivables | AP Invoices

Transaction List

Project For: 10000 Test

Man | Internal | All Customers | AP Vendors

Project For: 10000 Test

- INTERNAL USE
- INTERNAL AP CUSTOMER
- INTERNAL AP VENDOR
- REQUIRES REGULATION

GO EASY!

Production (Production Tab)

EasyWorld Accounting Information System

Projects / Run

Project Name: Production

Production Order ID: 1474733401 Select Project ID: 10000 Production:

PRODUCTION ORDER COMPONENTS / ASSEMBLES COMPONENT ITEM / ASSEMBLY ITEM

Production Order: General Financial Output Qty Component: General WIP ORDER AP ORDER Financial Output Qty Item:

Production Order: [ADD PO] [EDIT PO] [APPROVE PO] Component: [ADD COMPONENT] [APPROVE COMPONENT] [UNAPPROVE COMPONENT] Component Item: [ADD ITEM] [APPROVE ITEM] [UNAPPROVE ITEM]

Unapproved | Approved | Closed | Cancelled | Inactive | Active

PO Occured #	Name	Status	PO Component #	Name	Qty/Reqd	Qty	Item #	Name	Qty/Reqd	Qty
804070002	804070002	ACTIVE	BASE	BASE	0	16	BASE/PURCHASE	BASE/PURCHASE	2	8
			PAGE220	PAGE220	8	8	BASE	BASE	3	30
			PAGE1	PAGE1	8	8	BASE/BOOKING	BASE/BOOKING	5	20
			PAGE3	PAGE3	8	8	CARGLASS	CARGLASS	4	16
			PPAGE0	PPAGE0	3	3	MOR2500	MOR2500	2	8
			SYSTEMC	SYSTEMC	8	20				
			SYSTEMF	SYSTEMF	2	8				

Production Run: Component Pricing: Financial Labor Expense Item Pricing: Level Pricing

Production Order Run: [ADD PO RUN] [ADD RUN to PO RUN] [PRINT RUN] Component Pricing: [ADD OPERATION] [APPROVE OPERATION] [UNAPPROVE OPERATION] Component Item Pricing: [ADD OPERATION] [APPROVE OPERATION] [UNAPPROVE OPERATION]

Unapproved | Approved | Production | Cancelled | Inactive | Active

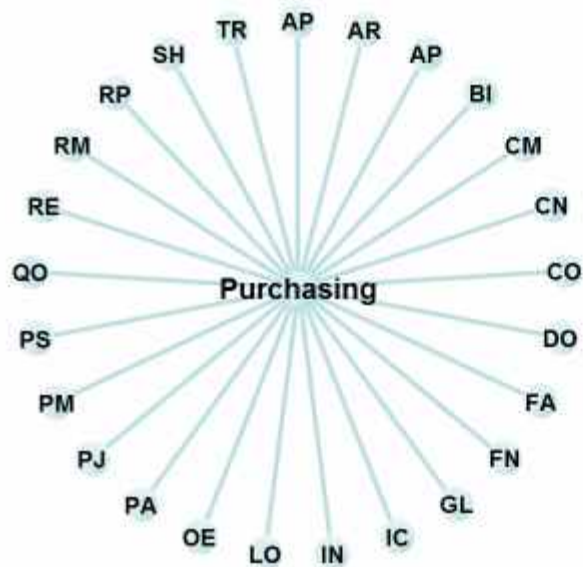
PO #	Name	Run #	Operation/Service ID	Operation/Service	Work Center/Vendor	Operation/Service ID	Operation/Service	Work Center/Vendor
10002	804070002	1	TUPPING	TUPPING	DEFAULT	WASHING	WASHING	DEFAULT

6/25/06 11:48





EasyWorld Purchasing Integration

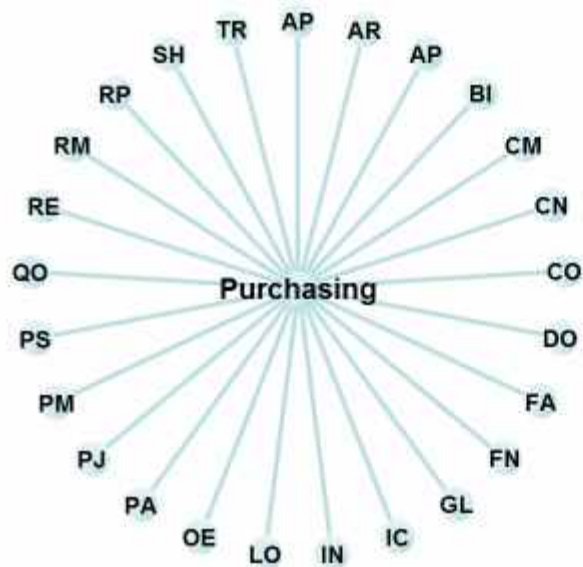


- AP Accounts Payable
- AR Accounts Receivable
- BI Billing
- CM Communications (Messaging On Events)
- CN Contracts
- CO Contacts
- DO Documents
- FA Fixed Assets
- FN Fund Accounting
- GL General Ledger
- HR Human Resources
- IC Inventory Control
- OE Order Entry
- PA Payroll
- PJ Projects
- PM Production
- PS Point of Sale
- QO Quotes
- RE Receiving
- RM Risk Management
- RP Reports Engine
- SH Shipping
- TR Treasury





EasyWorld Purchasing Integration



- AP Accounts Payable
- AR Accounts Receivable
- BI Billing
- CM Communications (Messaging On Events)
- CN Contracts
- CO Contacts
- DO Documents
- FA Fixed Assets
- FN Fund Accounting
- GL General Ledger
- HR Human Resources
- IC Inventory Control
- OE Order Entry
- PA Payroll
- PJ Projects
- PM Production
- PS Point of Sale
- QO Quotes
- RE Receiving
- RM Risk Management
- RP Reports Engine
- SH Shipping
- TR Treasury





EasyWorld Point of Sale Integration (POS)



- AP Accounts Payable
- AR Accounts Receivable
- BI Billing
- CM Communications (Messaging On Events)
- CN Contracts
- CO Contacts
- DO Documents
- FA Fixed Assets
- FN Fund Accounting
- GL General Ledger
- HR Human Resources
- IC Inventory Control
- OE Order Entry
- PA Payroll
- PJ Projects
- PM Production
- PO Purchase Orders
- PS Point of Sale
- QO Quotes
- RE Receiving
- RP Reports Engine
- SA Sales Force Automation
- SH Shipping
- SR Student Records
- TR Treasury





EasyWorld Quotes Integration

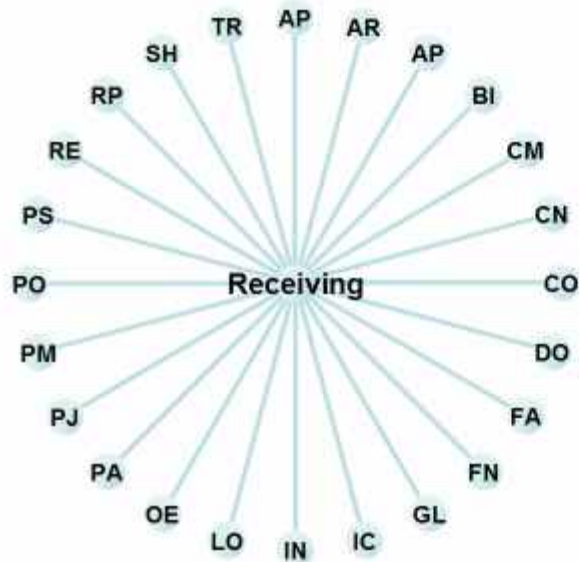


- AP Accounts Payable
- AR Accounts Receivable
- BI Billing
- CM Communications
(Messaging On Events)
- CN Contracts
- CO Contacts
- DO Documents
- GL General Ledger
- HR Human Resources
- IC Inventory Control
- LO Locations
- OE Order Entry
- PJ Projects
(By Line Item)
- PM Production
(By Line Item)
- PO Purchase Orders
(Qty On Order)
- PS Point of Sale
- RE Receiving
(Qty On Order)
- SH Shipping
- TR Treasury





EasyWorld Receiving Integration



- AP Accounts Payable
- AR Accounts Receivable
- BI Billing
- CM Communications (Messaging On Events)
- CN Contracts
- CO Contacts
- DO Documents
- FA Fixed Assets
- FN Fund Accounting
- GL General Ledger
- HR Human Resources
- IC Inventory Control
- OE Order Entry
- PA Payroll
- PJ Projects
- PM Production
- PO Purchase Orders
- PS Point of Sale
- RP Reports Engine
- SH Shipping
- TR Treasury





EasyWorld Risk Management Integration

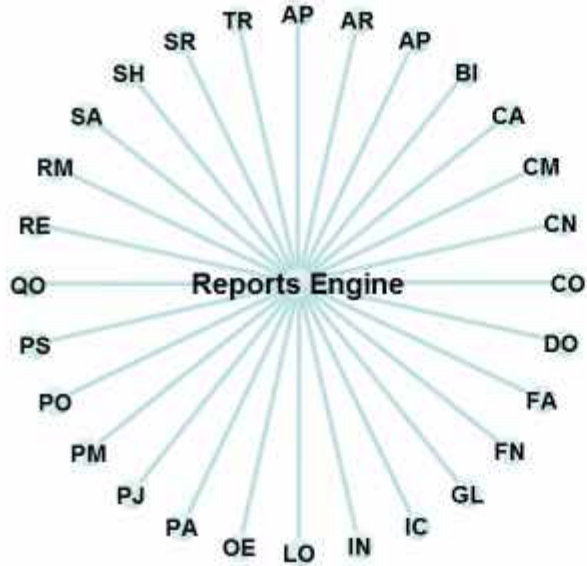


- AP Accounts Payable
- AR Accounts Receivable
- BI Billing
- CA Call Accounting
- CM Communications
- CN Contracts
- CO Contacts
- DO Documents
- FA Fixed Assets
- FN Fund Accounting
- GL General Ledger
- HR Human Resources
- IC Inventory Control
- OE Order Entry
- PA Payroll
- PJ Projects
- PM Production
- PO Purchase Orders
- PS Point of Sale
- QO Quotes
- RE Receiving
- RP Reports Engine
- SA Sales Force Automation
- SH Shipping
- SR Student Records
- TR Treasury





EasyWorld Reports Engine Integration

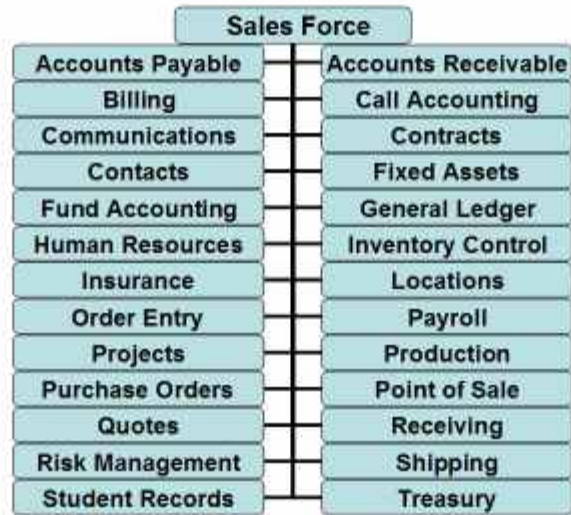


- AP Accounts Payable
- AR Accounts Receivable
- BI Billing
- CA Call Accounting
- CM Communications
- CN Contracts
- CO Contacts
- DO Documents
- FA Fixed Assets
- FN Fund Accounting
- GL General Ledger
- HR Human Resources
- IC Inventory Control
- OE Order Entry
- PA Payroll
- PJ Projects
- PM Production
- PO Purchase Orders
- PS Point of Sale
- QO Quotes
- RE Receiving
- RM Risk Management
- SA Sales Force Automation
- SH Shipping
- SR Student Records
- TR Treasury



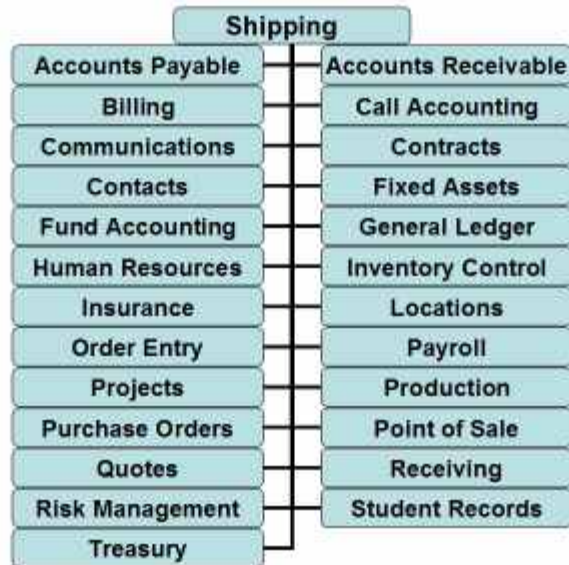


EasyWorld Sales Force Integration



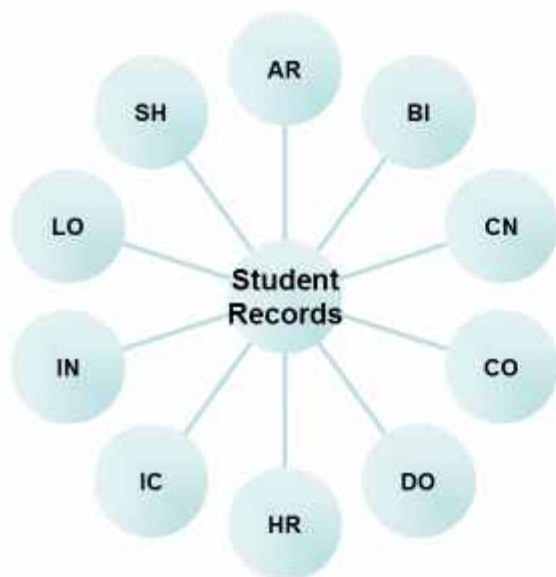


EasyWorld Shipping Integration





EasyWorld Student Records Integration



- AR Accounts Receivable
- BI Billing
- CS Class Schedule
- CO Communications
(Messaging On Events)
- CN Contracts
- CO Contacts
- DO Documents
- HR Human Resources
- IC Inventory Control
- IN Insurance
- LO Locations
- SH Shipping





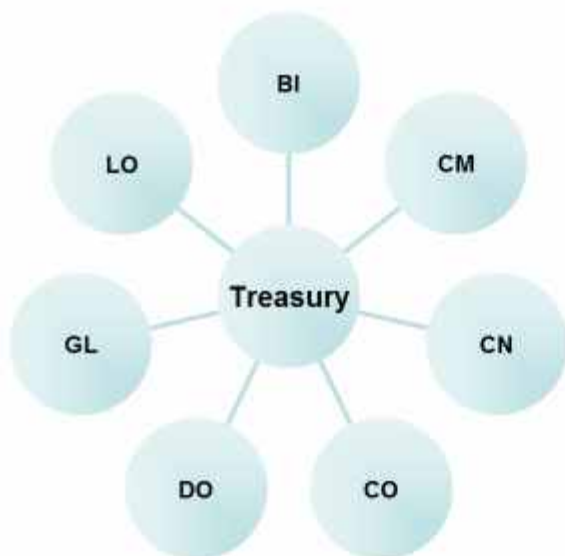
EasyWorld Student Records Functions

Student Records	
Application/SAT	Class Notes
Registration	Clubs
Financial Aid	Graduation Date
Class Schedules	Alumni
Major	Minor
Core Classes	Locations
Prerequisites	Electives
Credits	Cumulative GPA
Counselors	Books
Medical History	Insurance
Transcripts	Awards





EasyWorld Treasury Integration



- BI Billing
- CM Communications (Messaging)
- CN Contracts
- DO Documents
- GL General Ledger
- HR Human Resources
- LO Locations



